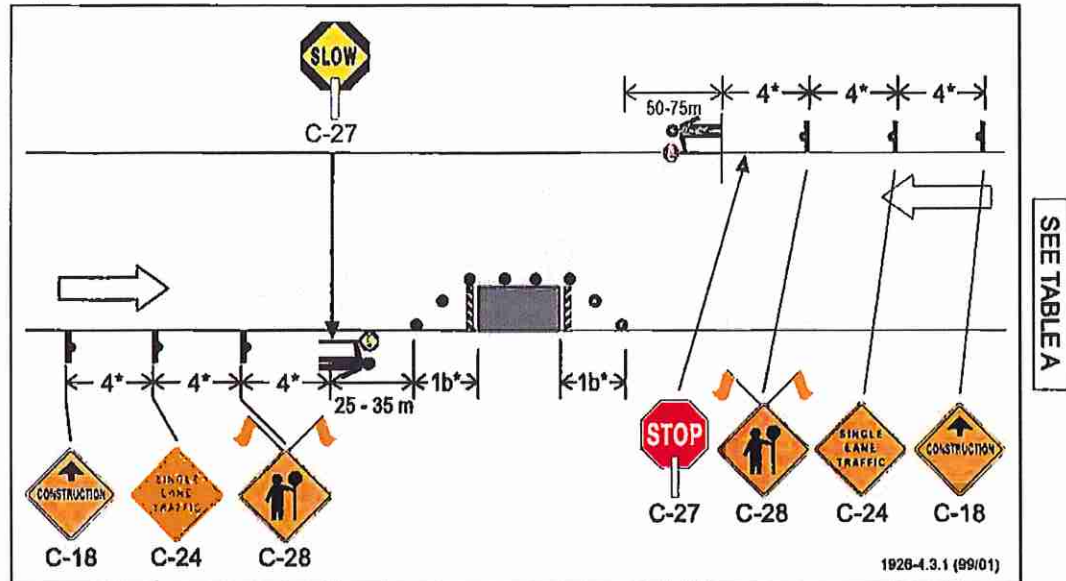


Figure 4.3.1 Lane Closure With TCPs – Two Lane Two-way Roadway



- If the one lane section is sufficiently short (eg., a spot obstruction), sight distance is adequate, and traffic volumes are light, it may be possible to omit the TCP for the open lane or possibly even both TCPs, and let traffic flow be self regulating. If the TCP for the open lane is omitted, the corresponding C-28 sign must be omitted. If the TCP for the closed lane is also omitted, the C-28 for that direction must be replaced with an R-56 Yield to Oncoming Traffic.



Data accuracy not guaranteed